

2/10

2.10

1/2
2/10

1
2/10
1

A handwritten musical score consisting of ten staves. The notation is dense and includes various symbols such as vertical lines, circles, and some illegible text. A prominent scribble is located in the upper left quadrant, and another large scribble is at the bottom. A box in the second staff contains the text "x=7=8 reduce cross" and "=88". A circled "1" is written in the top right margin, and a circled "1" is written in the middle right margin. The score is heavily annotated with circles and lines, suggesting a complex or experimental composition.

2-2
 [Scribbles and illegible handwritten notes at the bottom of the page]

Op. 10

Op. 10
2
3

The image shows a handwritten musical score consisting of ten staves. The notation is dense and includes various symbols such as vertical lines, slurs, and accidentals. There are several large scribbles on the left side of the page, possibly indicating corrections or deletions. The score is written in black ink on a white background.

Handwritten signature or initials at the bottom of the page.

Op. 10



3

Op. 10

Handwritten musical notation on two staves. The first staff contains a series of rhythmic markings and some notes with accidentals. The second staff continues the notation with similar markings and notes.

Handwritten musical notation on a single staff, featuring a series of rhythmic markings and notes.

Handwritten musical notation on a single staff, showing rhythmic markings and notes.

Handwritten musical notation on a single staff, with rhythmic markings and notes.

Handwritten musical notation on a single staff, featuring rhythmic markings and notes.

Handwritten musical notation on a single staff, with rhythmic markings and notes.

Handwritten musical notation on a single staff, showing rhythmic markings and notes.

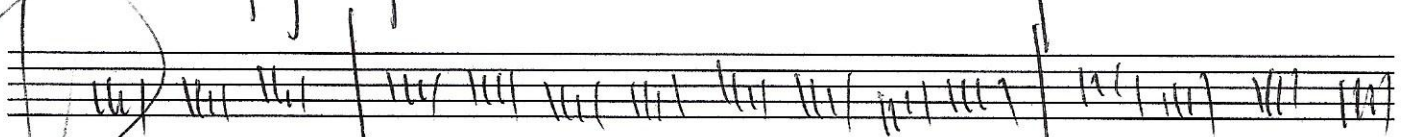
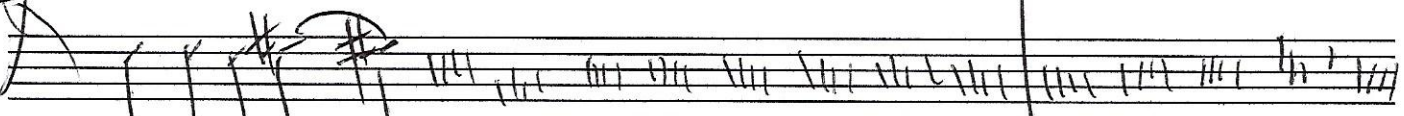
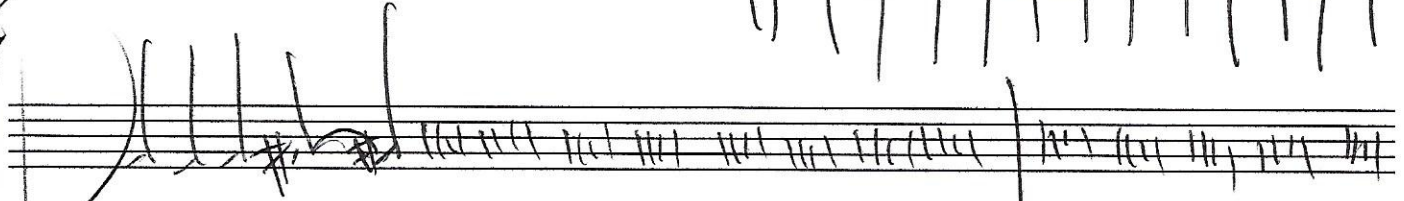
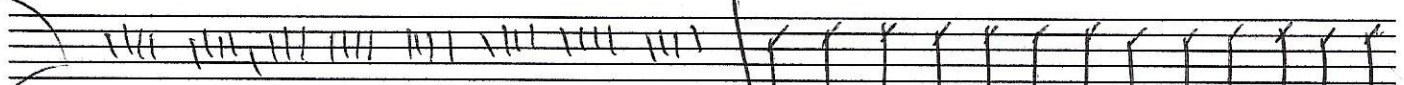
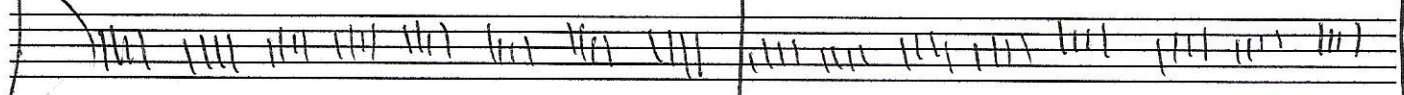
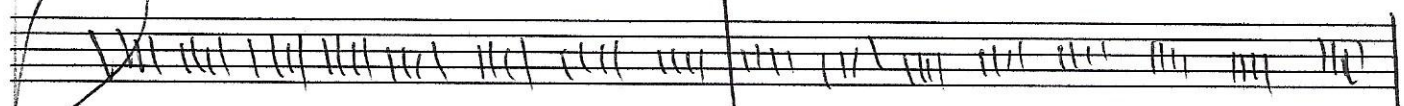
Handwritten musical notation on a single staff, with rhythmic markings and notes.

Handwritten musical notation on a single staff, featuring rhythmic markings and notes.

Handwritten scribbles and a wavy line at the bottom left of the page.

Q. P.

11
④
2 10



[Handwritten scribble]

9.10

11/5

20

Handwritten musical notation on two staves. The notation consists of vertical lines and some curved lines, possibly representing notes or stems. There are some sharp symbols (#) and a circled '5' above the second staff.

Handwritten musical notation on two staves. The notation consists of vertical lines and some curved lines, possibly representing notes or stems. There are some sharp symbols (#) and a circled '5' above the second staff.

Handwritten musical notation on two staves. The notation consists of vertical lines and some curved lines, possibly representing notes or stems. There are some sharp symbols (#) and a circled '5' above the second staff.

Handwritten musical notation on two staves. The notation consists of vertical lines and some curved lines, possibly representing notes or stems. There are some sharp symbols (#) and a circled '5' above the second staff.

Handwritten musical notation on two staves. The notation consists of vertical lines and some curved lines, possibly representing notes or stems. There are some sharp symbols (#) and a circled '5' above the second staff.

Handwritten scribbles and markings at the bottom left of the page.

A large, dense handwritten scribble or correction at the bottom center of the page, covering several staves.

Handwritten notes at the bottom right, including the number '260' and other illegible markings.