

CB

3 studies
for Clarence

Op 20

Op. 20

1

No. 1

2

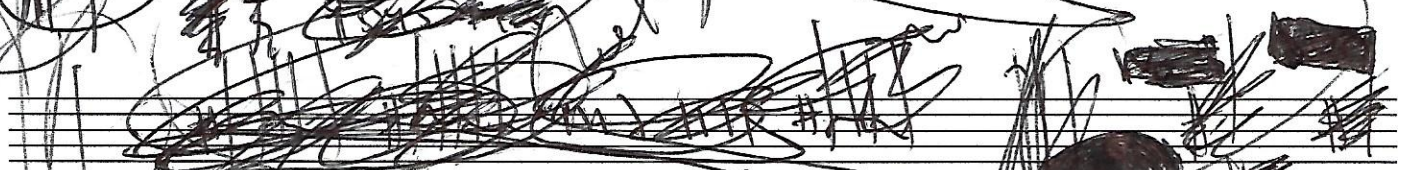
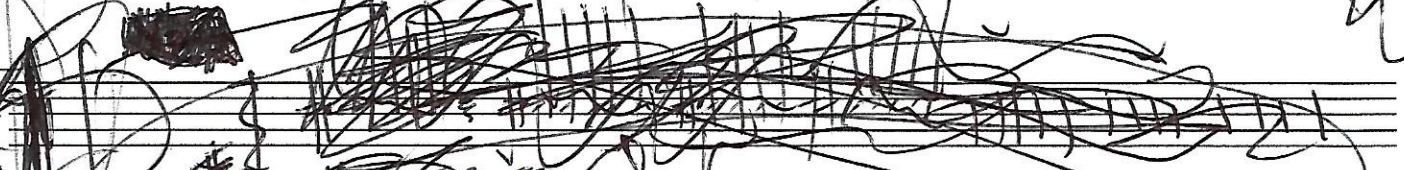
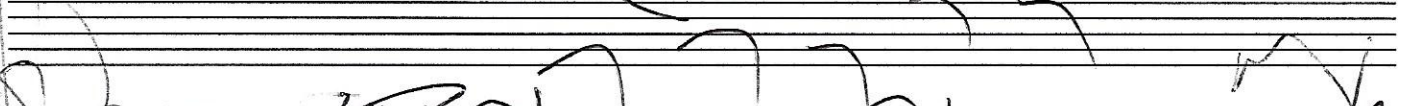
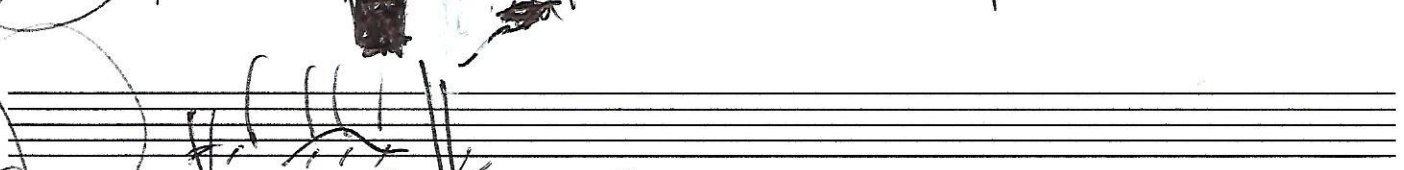
3

lll

05
020

4

Handwritten scribbles and markings on the left margin, including a large '4' at the top and various loops and lines extending down the page.



no 3

Handwritten musical notation for 'no 3' consisting of six staves. The notation is dense and includes various symbols such as vertical lines, slurs, and sharp signs (#). The first staff has a circled section. The second staff has a circled section. The third staff has a circled section. The fourth staff has a circled section. The fifth staff has a circled section. The sixth staff has a circled section.

no 4

Handwritten musical notation for 'no 4' consisting of six staves. The notation is dense and includes various symbols such as vertical lines, slurs, and flat signs (b). The first staff has a circled section. The second staff has a circled section. The third staff has a circled section. The fourth staff has a circled section. The fifth staff has a circled section. The sixth staff has a circled section.



no 3 p. 20



No. 5

Op. 20

Handwritten scribbles and notes, possibly indicating a section or performance instruction.