

~~Handwritten scribbles and a circled number 1~~

no. 1

P. 21

Handwritten musical notation on a single staff, featuring vertical lines and some curved strokes.

Handwritten musical notation on a single staff, consisting of vertical lines.

Handwritten musical notation on a single staff, consisting of vertical lines.

Handwritten musical notation on a single staff, consisting of vertical lines.

Handwritten musical notation on a single staff, consisting of vertical lines.

Handwritten musical notation on a single staff, consisting of vertical lines.

Handwritten musical notation on a single staff, consisting of vertical lines.

Handwritten musical notation on a single staff, consisting of vertical lines.

Handwritten notes: "no. 1", "P. 21", and a circled "1".

Handwritten musical notation on multiple staves, including various scribbles, wavy lines, and some dark ink blotches.

Op. 21

1 1/2 2

A large, dense scribble of black ink covering the top two staves of the manuscript. The scribble consists of many overlapping, vertical and horizontal lines, completely obscuring any underlying musical notation.

Handwritten musical notation on a single staff, consisting of a series of rhythmic marks and notes.

no. 2

Handwritten musical notation on a single staff, featuring a wavy line with vertical stems and various accidentals (sharps and flats).

Handwritten musical notation on a single staff, similar to the previous staff, with a wavy line and stems.

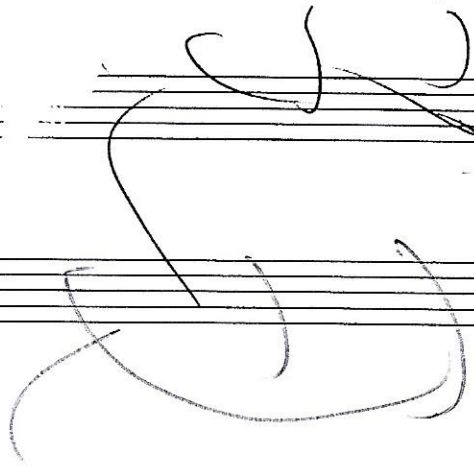
Handwritten musical notation on a single staff, continuing the wavy line pattern.

Handwritten musical notation on a single staff, ending with a double bar line.

Handwritten signature and the text "no. 2 op. 21"

A series of empty musical staves with some faint markings.

A series of empty musical staves.



Op. 21



no. 3

Handwritten musical notation on two staves. The top staff contains a series of rhythmic patterns with stems and beams. The bottom staff contains a series of rhythmic patterns with stems and beams, appearing to be a bass line or accompaniment.

Handwritten musical notation on two staves. A downward-pointing arrow is positioned above the second staff, pointing to a specific rhythmic pattern.

Handwritten musical notation on two staves. Two downward-pointing arrows are positioned above the second staff, pointing to specific rhythmic patterns.

Handwritten musical notation on two staves. A large bracket on the right side of the staves indicates a section. The notation consists of rhythmic patterns with stems and beams.

Handwritten text: "Op. 21" and "no. 3" written vertically, with a flourish below it.

Handwritten musical notation on two staves. The notation is very light and appears to be a sketch or a continuation of the previous section, featuring rhythmic patterns with stems and beams.