

Op. 23
no. 1
for piano triola
viol
pian
bass

23

end no. 1
Op. 23

Op. 23

no 2

Handwritten musical notation for the first system. The top staff contains a violin part with notes and stems. The bottom staff is almost entirely obscured by dense, dark scribbles. The word "violin" is written above the bottom staff. A circled number "2" is at the end of the system.

* * * * *
 * * * * *

Handwritten musical notation for the second system. The top staff shows rhythmic patterns with stems and flags. The bottom staff contains a series of rhythmic markings, possibly "bx" or "bx", indicating a specific rhythmic pattern.

Handwritten musical notation for the third system. The top staff shows rhythmic patterns with stems and flags. The bottom staff contains a series of rhythmic markings, possibly "bx" or "bx", indicating a specific rhythmic pattern.

Handwritten musical notation for the fourth system. The top staff shows rhythmic patterns with stems and flags. The bottom staff contains a series of rhythmic markings, possibly "bx" or "bx", indicating a specific rhythmic pattern.

Handwritten musical notation for the fifth system. The top staff shows rhythmic patterns with stems and flags. The bottom staff contains a series of rhythmic markings, possibly "bx" or "bx", indicating a specific rhythmic pattern.

Op. 23
 2

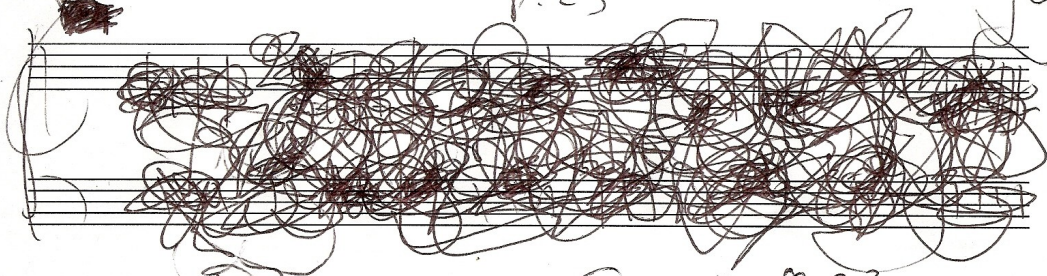
Op. 23

3

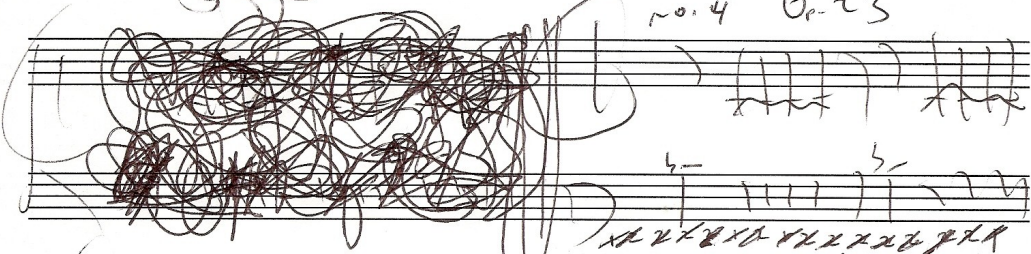
Handwritten musical score for piano, consisting of five systems of staves. The notation includes treble and bass clefs, a key signature of one flat (B-flat), and a 3/4 time signature. The music features a complex rhythmic pattern with many sixteenth notes and rests. The first system is labeled "No. 3" and "violin arca". The second system has a large blacked-out section in the bass line and the handwritten text "XXXXXX" written vertically on the right. The fifth system ends with a double bar line and the handwritten text "schlus" and "adagio".

Op. 23

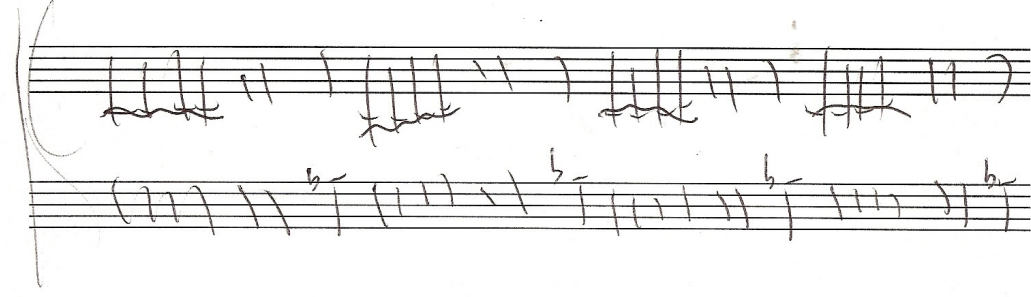
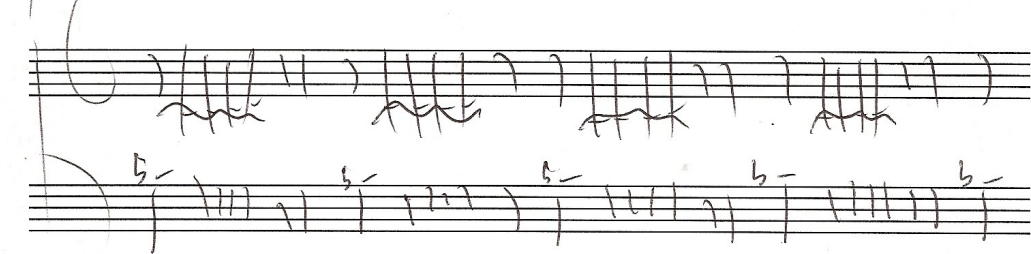
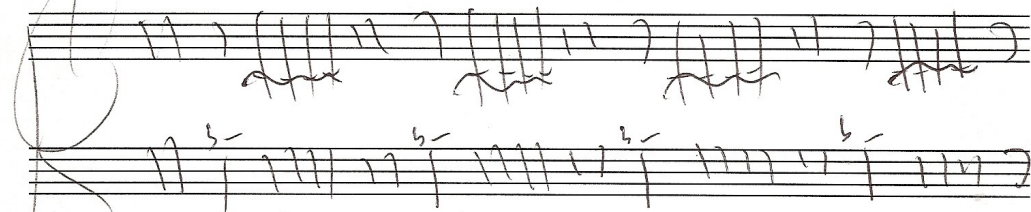
4



no. 4 Op. 23



Handwritten rhythmic notation consisting of vertical lines and slanted strokes, possibly representing a drum pattern or a specific rhythmic sequence.



Op. 23

5

recitativo

Handwritten musical notation for the first system. The upper staff is in treble clef and contains several measures of music with notes and stems. The lower staff is in bass clef and contains notes with flat accidentals (b-).

Handwritten musical notation for the second system. The upper staff continues the melodic line, and the lower staff continues the bass line with flat accidentals.

Handwritten musical notation for the third system. The notation continues on both staves, with some notes appearing to be beamed together.

A section of the manuscript that has been heavily scribbled over with dark ink, obscuring the original notation. There are some faint markings and a small circle visible through the ink.

No. 5

viola pizz.

Handwritten musical notation for the fourth system, labeled "No. 5" and "viola pizz.". The upper staff contains a sequence of notes with stems, and the lower staff contains notes with flat accidentals. There are some additional markings like "g" and "3 2 2 1 2 1 1" above the notes.

Handwritten scribble or signature.

Handwritten scribbles or corrections.

Op. 23

6

No. 5 cont

No. 6

Handwritten notes and symbols written vertically on the right margin, including various symbols like 'p', 'f', and 'ff'.

Op. 23

⑦

mus. cont.

The first system of handwritten musical notation consists of two staves. The upper staff is marked with a treble clef and contains several measures of rhythmic notation, primarily vertical lines with stems. The lower staff is marked with a bass clef and contains corresponding rhythmic notation, including some notes with stems and beams.

The second system of handwritten musical notation consists of two staves. The upper staff is marked with a treble clef and contains several measures of rhythmic notation, primarily vertical lines with stems. The lower staff is marked with a bass clef and contains corresponding rhythmic notation, including some notes with stems and beams.

The third system of handwritten musical notation consists of two staves. The upper staff is marked with a treble clef and contains several measures of rhythmic notation, primarily vertical lines with stems. The lower staff is marked with a bass clef and contains corresponding rhythmic notation, including some notes with stems and beams.

The fourth system of handwritten musical notation consists of two staves. The upper staff is marked with a treble clef and contains several measures of rhythmic notation, primarily vertical lines with stems. The lower staff is marked with a bass clef and contains corresponding rhythmic notation, including some notes with stems and beams.

The fifth system of handwritten musical notation consists of two staves. The upper staff is marked with a treble clef and contains several measures of rhythmic notation, primarily vertical lines with stems. The lower staff is marked with a bass clef and contains corresponding rhythmic notation, including some notes with stems and beams.

Op. 13

②

ms. cont

No. 7
viola pizz.

↑ ~~XXXXXXXXXXXX~~

Op. 23

9

no. 7 cont

No. 8

no. 8. out

Handwritten musical notation on a grand staff. The upper staff contains a series of notes with stems, some of which are crossed out with 'X' marks. The lower staff contains rhythmic markings, possibly representing bass notes or fingerings, with some 'b' characters. A large blacked-out circle is present in the middle of the upper staff.

Handwritten musical notation on a grand staff. The upper staff features dense clusters of notes, possibly representing chords or tremolos. The lower staff has rhythmic markings and some 'b' characters.

Handwritten musical notation on a grand staff. The upper staff shows rhythmic patterns with stems. The lower staff has rhythmic markings and some 'b' characters.

Handwritten musical notation on a grand staff. The upper staff shows rhythmic patterns with stems. The lower staff has rhythmic markings and some 'b' characters.

Handwritten musical notation on a grand staff. The upper staff begins with a large, dense scribble that obscures the notes. The lower staff features wavy lines, possibly representing a tremolo or a specific performance technique.

Handwritten wavy lines at the bottom of the page, possibly representing a tremolo or a specific performance technique.

no. 3 cont

Op. 23

(11)

Handwritten musical notation on two staves. The top staff contains rhythmic markings and some notes, while the bottom staff has a wavy line.

Handwritten musical notation on two staves. The top staff contains rhythmic markings and notes. The bottom staff has a wavy line and a handwritten note "end of Op. 23 piano + viol".

Two empty musical staves.

Two empty musical staves.

Two empty musical staves.