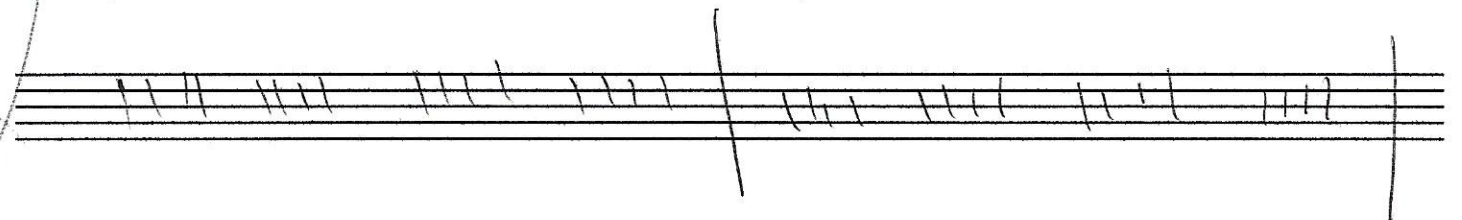
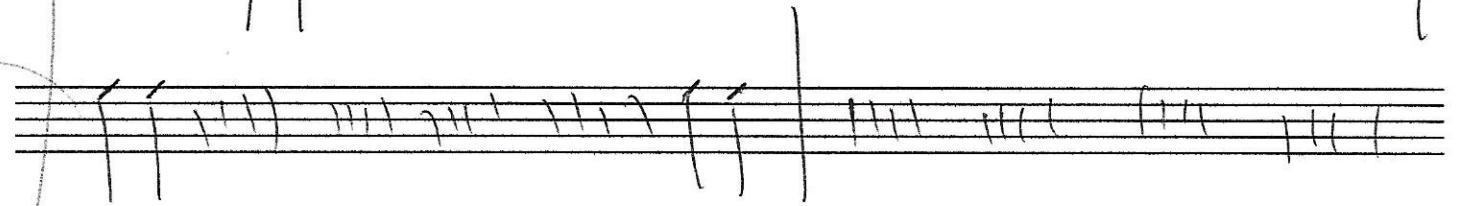
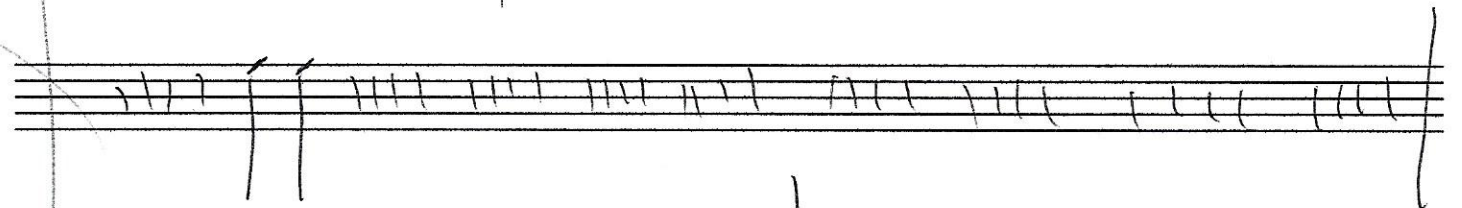
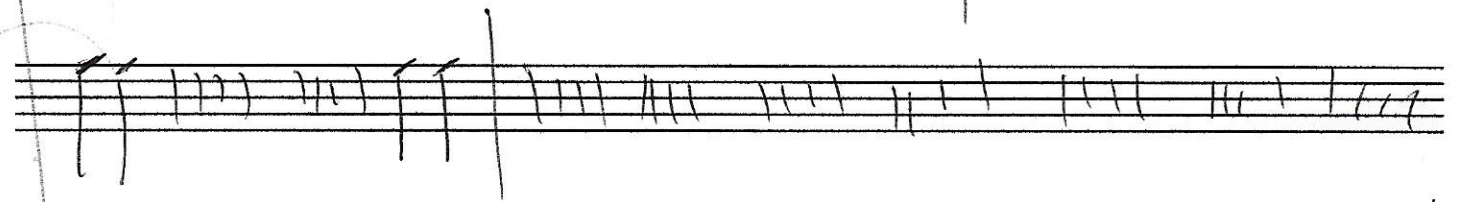
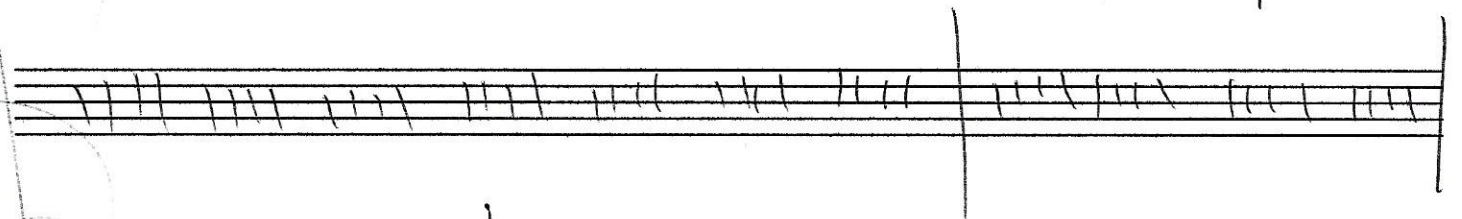
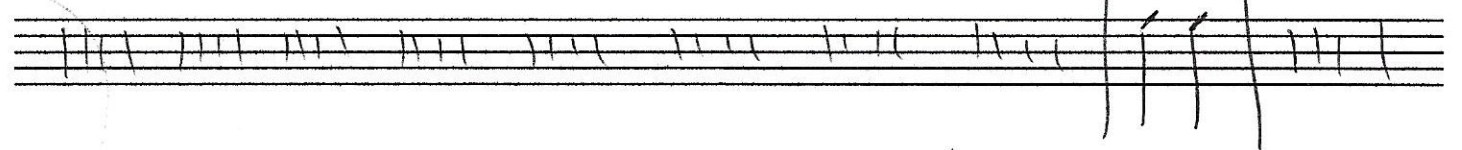
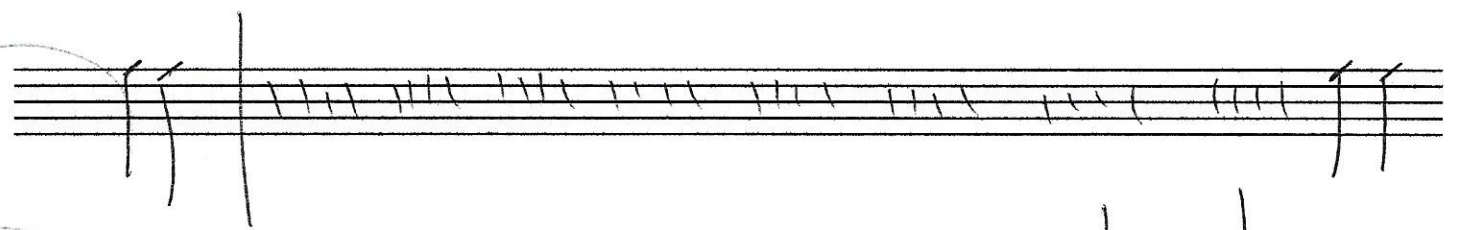
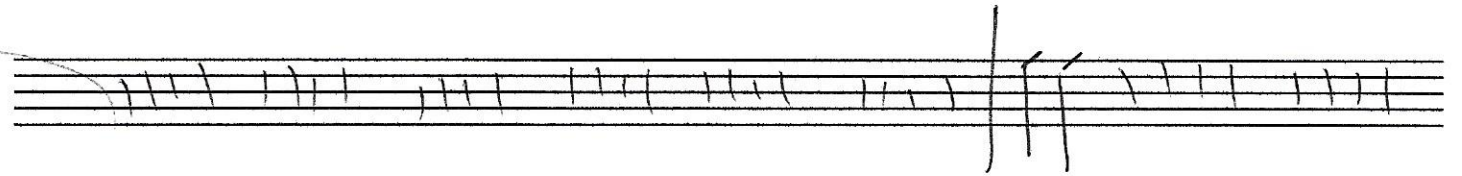
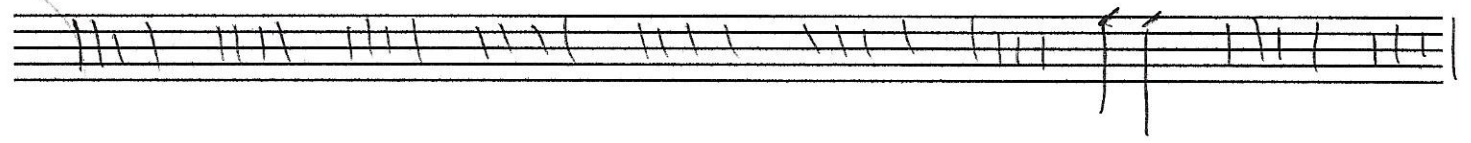


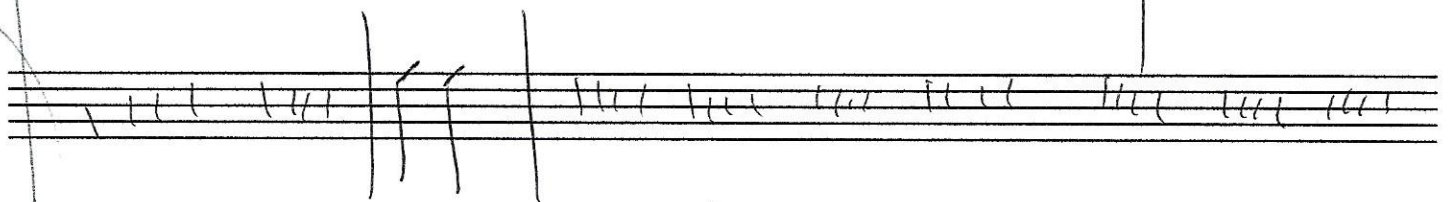
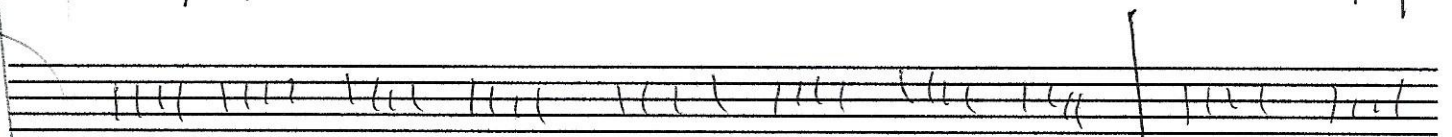
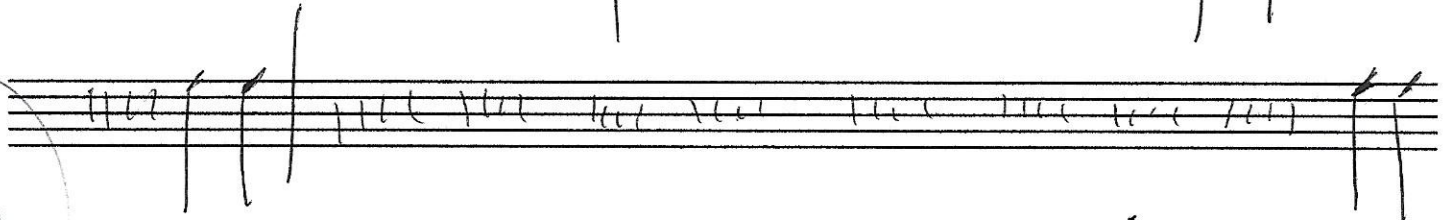
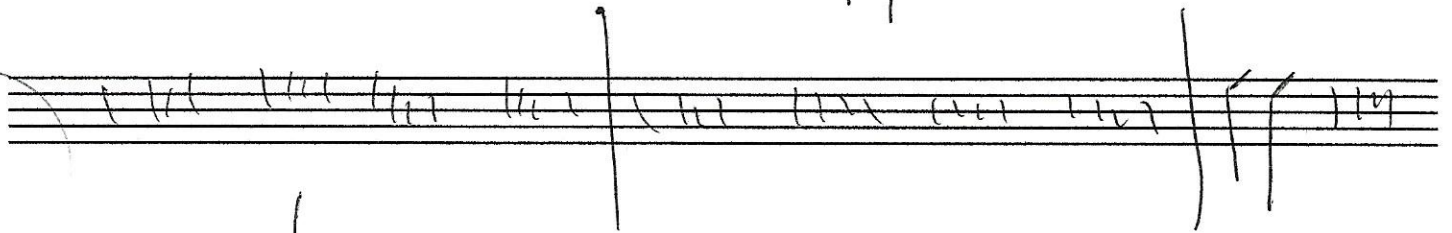
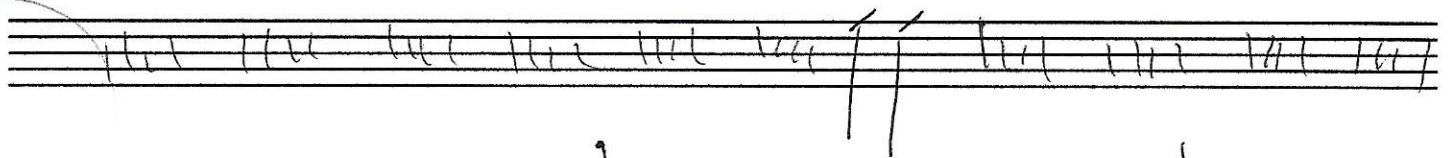
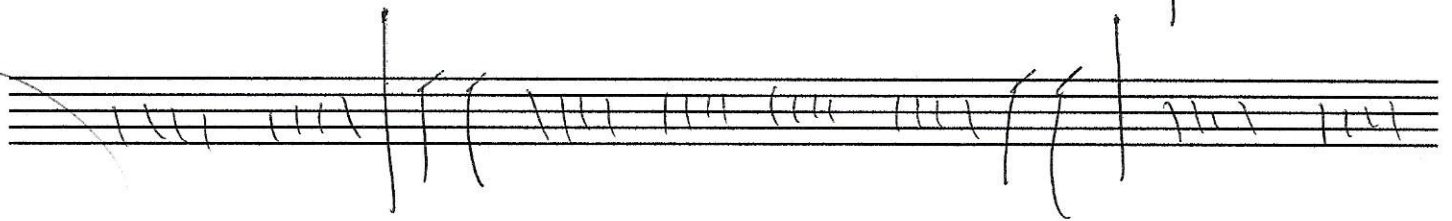
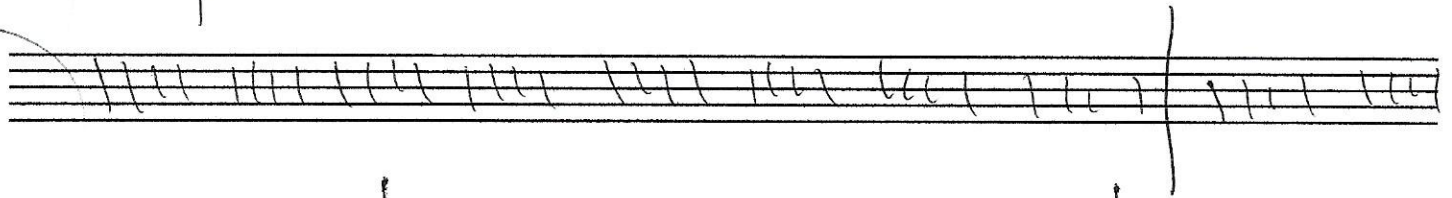
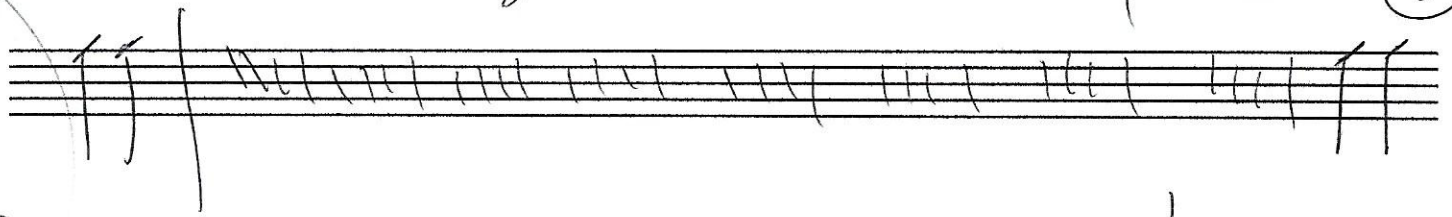
Op. 6

①



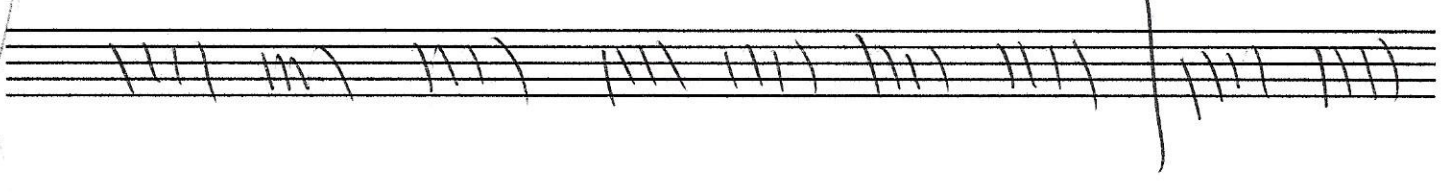
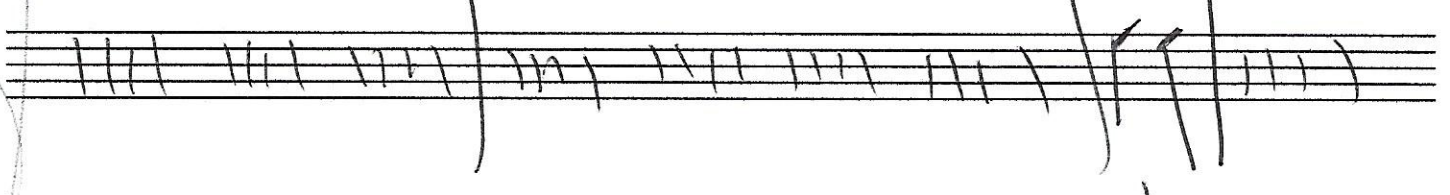
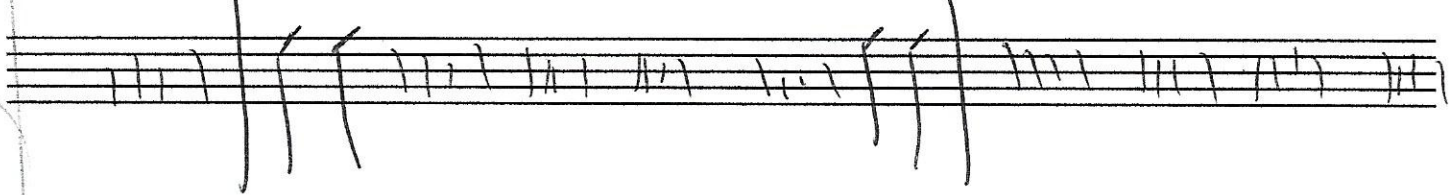
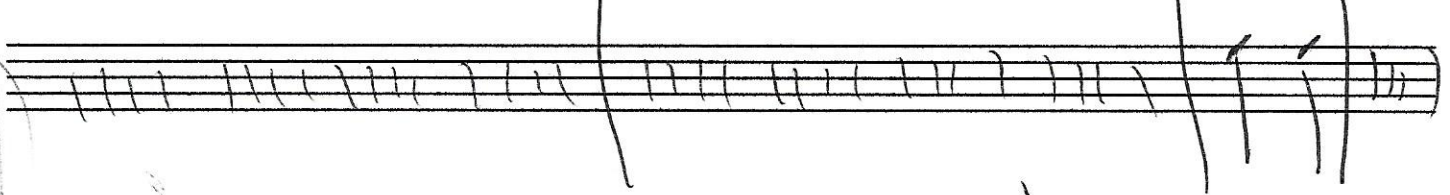
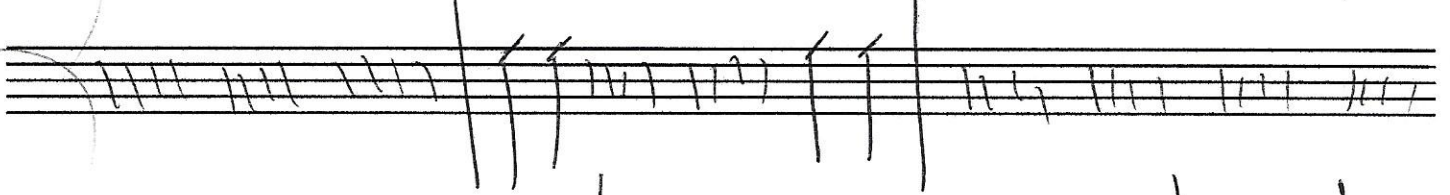
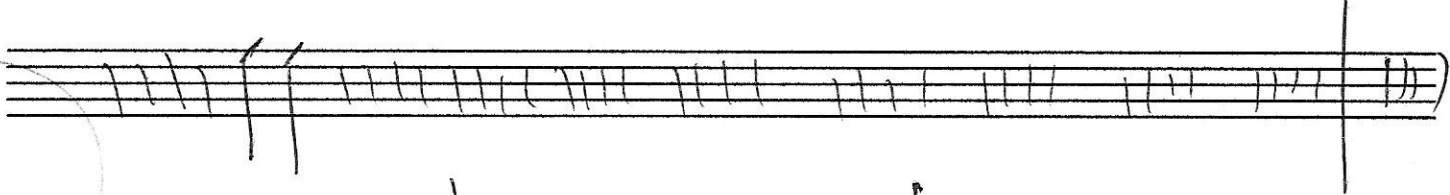
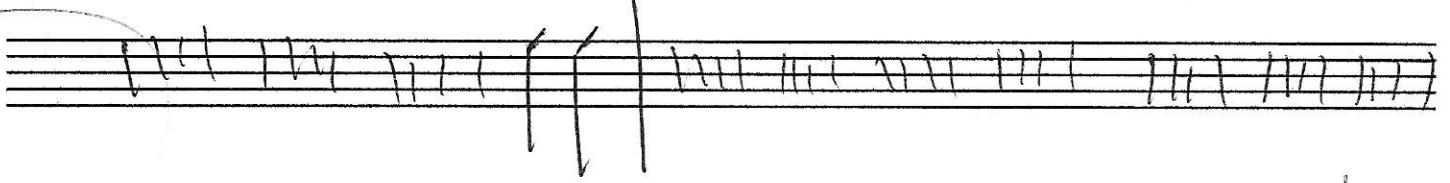
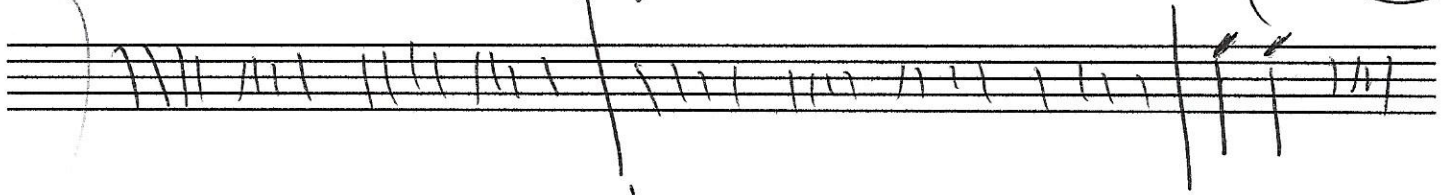
Op. 6

(1) ②



Op. 6

(3)



Op-6

(11)
⑤

The image shows ten musical staves. The first three staves contain rhythmic notation consisting of vertical lines with stems, indicating notes or rests. The fourth staff has some scribbles and the word "end" written in cursive. The remaining staves are mostly empty, with some light scribbles on the left side.